



# The ELIH-Med Project: Energy Efficiency in Low Income Housing in the Mediterranean

---

Anna Moreno - ENEA

Athens 21 November 2014



Projet co-financé par le Fonds Européen de Développement Régional - FEDER Project co-financed by European Regional Development Fund - ERDF



# ELIH Med project in a few lines

---

- ▶ ELIH Med is a strategic Project co-financed under the MED Program and will finish on December 2014 but the monitoring will run till the end of next year.
- ▶ The project has focuses on the development of energy efficiency policies in Low Income Housing (LIH) based on the results of pilot actions in 6 Mediterranean countries
- ▶ LIH in the Mediterranean area an important targets they represents up to the 40% of existing building and only by considering this target in the national and regional policies will be possible to reach the 2020 objectives.





# Some figures

---

**Total budget: almost 10 million euros**

**More than 1000 dwellings renovated**

- ▶ Greece:
  - Komotini 630 student university flats
- ▶ Italy:
  - Genoa 46 dwellings
  - Sassari 30 dwellings
  - Frattamaggiore 22 dwellings
- ▶ Malta: 35 dwellings
- ▶ France:
  - Arles 30 dwellings
- ▶ Cyprus: 25 dwellings
- ▶ Spain:
  - Valencia 56 dwellings
  - Malaga 140 dwellings





# The common capitalization process among ELIH-MED, MARIE and PROFORBIOMED

- “Collaboration agreement among PROFORBIOMED, ELIH-MED and MARIE projects”

Signed in the MEDBEE  
Forum, Brussels 22<sup>nd</sup>  
November 2012.



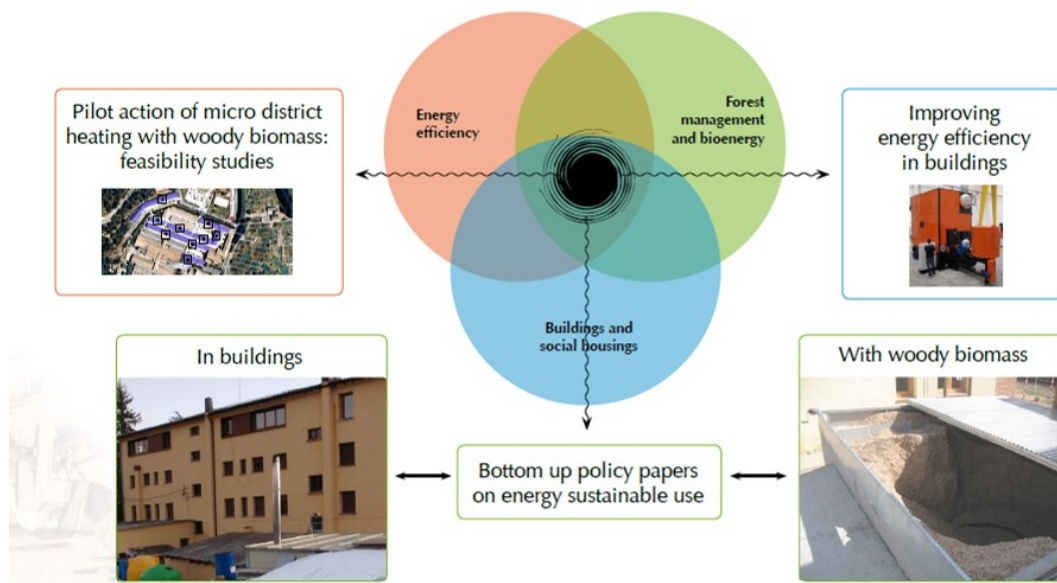
Projet co-financé par le Fonds Européen de Développement Régional - FEDER Project co-financed by European Regional Development Fund - ERDF



# The common capitalization process among ELIH-MED, MARIE and PROFORBIOMED

- “Collaboration agreement among PROFORBIOMED, ELIH-MED and MARIE projects”

- **Aim:** To foster joint actions , disseminate and capitalise their results.





# The common capitalization process among ELIH-MED, MARIE and PROFORBIOMED

- “Collaboration agreement among PROFORBIOMED, ELIH-MED and MARIE projects”
- **Commitments:**
  - To support the implementation of policy actions.
  - To support Policy Papers, Position Papers, Policy Proposals, etc.
  - To seek opportunities for collaboration in the design of joint pilot actions and the capitalization of their results.
  - To design joint dissemination actions within the scope of the common interest for guaranteeing a relevant impact of the three projects.



Projet co-financé par le Fonds Européen de Développement Régional - FEDER Project co-financed by European Regional Development Fund - ERDF





# The common capitalization process among ELIH-MED, MARIE and PROFORBIOMED

- “Ljubljana Declaration”

Signed in Lisbon 23<sup>rd</sup>  
October 2013, within  
the annual event of the  
MED Programme



Projet co-financé par le Fonds Européen de Développement Régional - FEDER Project co-financed by European Regional Development Fund - ERDF







# The common capitalization process among ELIH-MED, MARIE and PROFORBIOMED

- “Ljubljana Declaration”
  - **Position Paper** that shows the common position of the 3 projects, regarding Energy Efficiency and Renewable Energies, based on the analysis, outcomes and knowledge acquire with the implementation of their pilot actions.
  - It brings together **around 60 MED partners** (regional authorities, cities, territorial energy agencies, universities and international organisations).



Projet co-financé par le Fonds Européen de Développement Régional - FEDER Project co-financed by European Regional Development Fund - ERDF





# The common capitalization process among ELIH-MED, MARIE and PROFORBIOMED

## • Policy Paper

- **Aim:** Assist European institutions in the preparation of the next programming period 2014-2020.
- Document prepared by MARIE and ELIH-MED. Sustained by PROFORBIOMED.



POLICY PAPER

**IMPROVING MED TRANSNATIONAL COOPERATION  
ANSWERS TO ENERGY EFFICIENCY CHALLENGES IN  
BUILDINGS**

prepared by:

*the DTES Generalitat of Catalonia and the Mediterranean Institute (France)*



Projet co-financé par le Fonds Européen de Développement Régional - FEDER Project co-financed by European Regional Development Fund - ERDF





# ELIH-MED, MARIE and PROFORBIOMED demand to European institutions

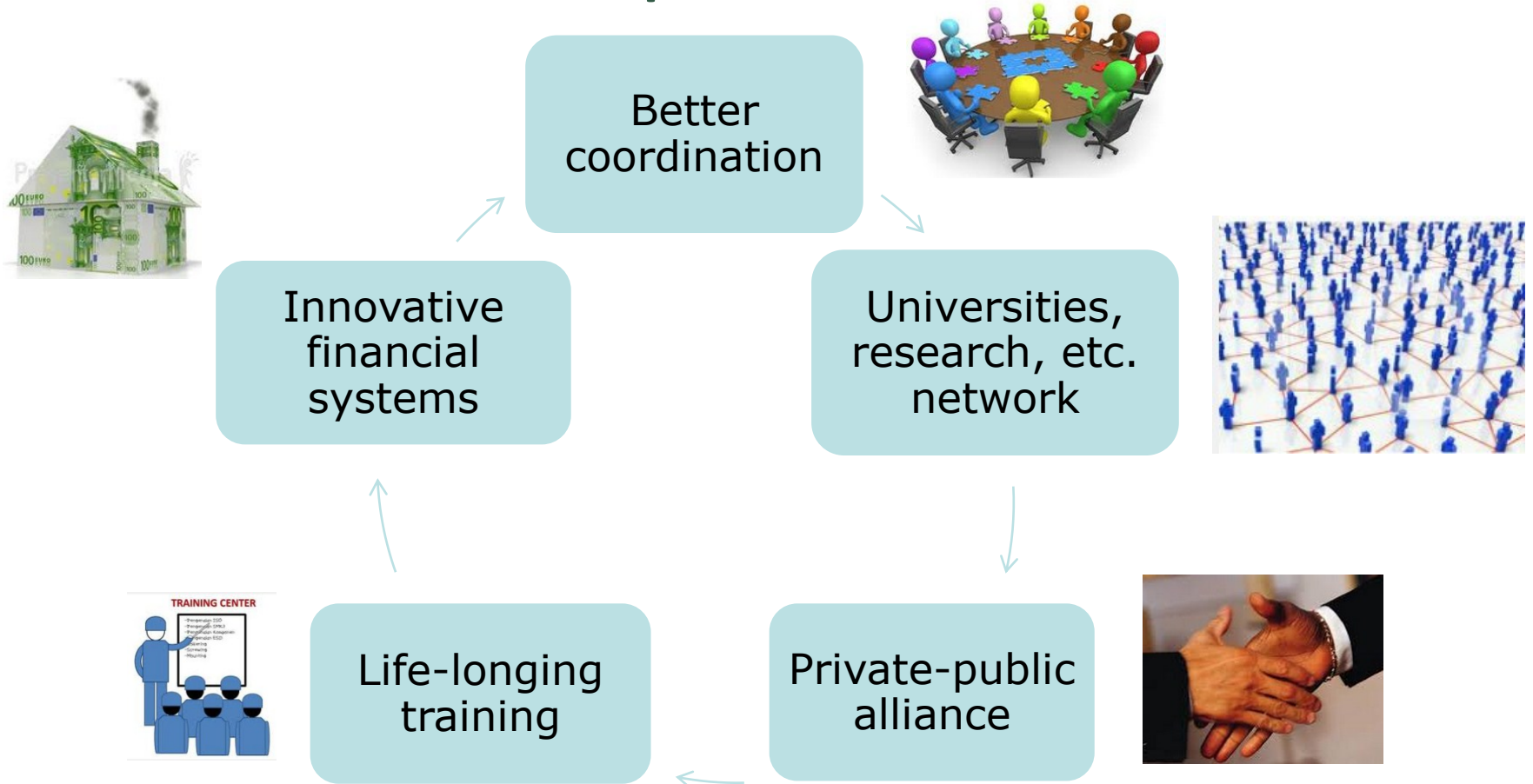
- The rules need to be changed to increase the use of Structural and Investment Funds (ESIF) in the refurbishment of low income houses



Projet co-financé par le Fonds Européen de Développement Régional - FEDER Project co-financed by European Regional Development Fund - ERDF



# ELIH-MED, MARIE and PROFORBIOMED demands to the European Commission



# demands to the Mediterranean Countries, Regions and Cities



Nearly zero buildings

Facilitate access to structural funds



Promote industry of prefabricate for EE

Awareness campaign





# ELIH-MED, MARIE and PROFORBIOMED demands to Managing Authorities of European funding programmes

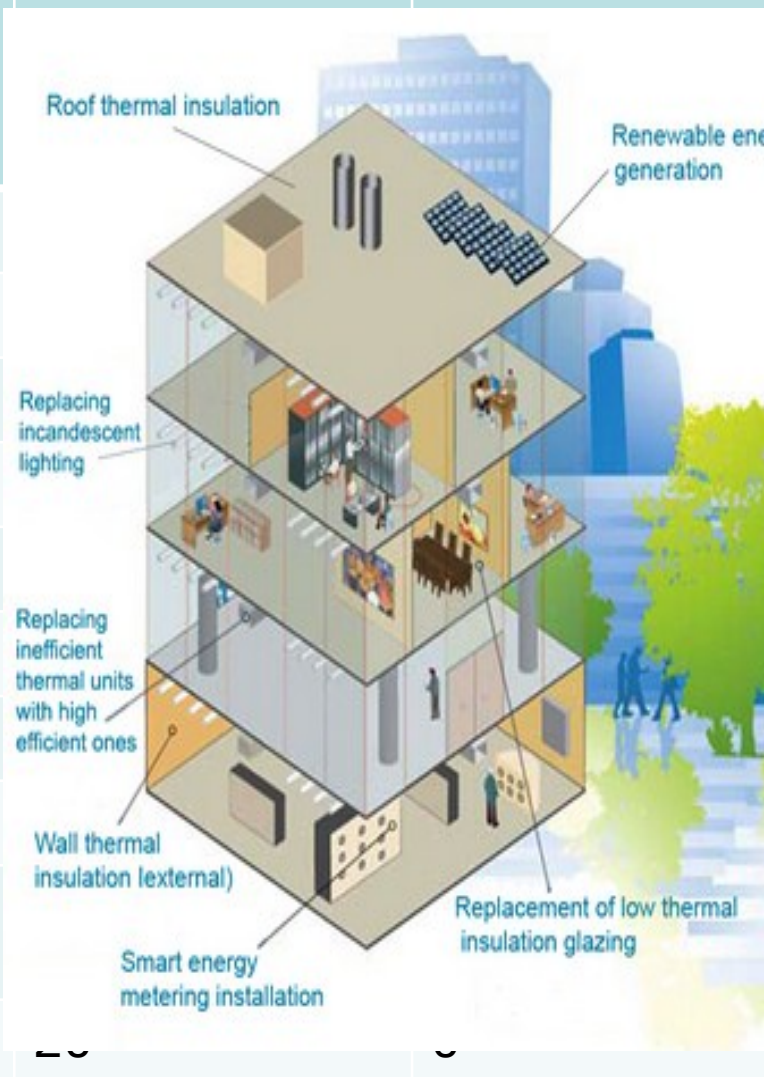
- ▶ Provide higher investments for the energy renovation of buildings and renewable energy sources in the Operational Programmes
- ▶ Establish investment priorities as identified in Policy Paper
- ▶ Include specific priority axes in the energy renovation of buildings and renewable energy in future calls for projects
- ▶ Foster concrete experimentations related to the energy renovation of buildings and renewable energy



Projet co-financé par le Fonds Européen de Développement Régional - FEDER Project co-financed by European Regional Development Fund - ERDF



# Pilot project refurbishment activities

Partner/Location	
Malaga (Spain)	
IVE/Valencia (Spain)	
Languedoc Roussillon (France)	
Genova (Italy)	
Laore Sardegna (Italy)	
Komotini (Greece)	
MIEMA (Malta)	
CEA (Cyprus)	
Frattamaggiore (Italia)	
	

## ► Guidelines for all the targets

### TARGET

#### POLICY MAKERS

As one of MED strategic projects, ELIH-Med has established its objectives to provide concrete inputs for the next 2014-2020 operational programs, through the convergence of Mediterranean indicators, strategic objectives...

→ continue

#### PUBLIC AUTHORITIES

In charge of the implementation of National regulations on the territories, public authorities within ELIH-Med project are analysed as regional and local authorities, and territorial public stakeholders, responsible for...

→ continue

#### REFURBISHMENT PROJECT MANAGERS

Having the responsibility of the planning, execution and closing of the pilot project, refurbishment project managers are the operational organizers of the refurbishment process.

Project managers also are contracting...

→ continue

#### PROFESSIONALS OF THE BUILDING/ENERGY SECTORS

To improve energy efficiency in LIH and experiment innovative energy efficiency measures and financial schemes, ELIH-Med focused on the impact of current energy policies on EE in LIH, to evaluate energy saving potential...

→ continue

#### INHABITANTS

Energy efficiency (EE) improvement in LIH is the focal point of ELIH-med, the involvement of inhabitants (tenants) of LIH in a large-scale pilot experimentation will be very important for the success of the project. An...

→ continue





# What we leave to all the Mediterranean countries

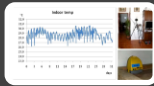
- ▶ The guidelines are divided for the different phases of the project:



Identification of the dwelling



Diagnosis



Monitoring



Financing



Tenders



Refurbishment



Dissemination awareness and capitalization



Policy paper and Ljubljana declaration



# What we leave to the inhabitants and the surroundings area

- ▶ A better understanding of European policies on energy efficiency
- ▶ An improved confidence on the European policies
- ▶ A better environment
- ▶ A better comfort
- ▶ ... More smiles



# Our recommendations

## Recommendation 21 -

TAKE INTO CONSIDERATION THE COOLING DEMAND ACCORDING TO CLIMATIC SPECIFICITIES



## Recommendation 24 -

MAINTAIN THE REGIONAL REFURBISHMENT GRANT THAT ALLOWS AUDITS IMPLEMENTATION AND DATA COLLECTION ON THE BUILDING STOCK



## Recommendation 25 -

ENHANCE THE NATIONAL "OBSERVATORY OF VULNERABILITY PROGRAM" THAT PROVIDES DATA ON THE BUILDING STOCK



## Recommendation 26 -

DEVELOP EXCHANGE DATA PROGRAMS AS FIDA, TO OTHERS SPANISH REGIONS, IN ORDER TO GATHER AND STANDARDIZE DIFFERENTS BUILDINGS DATA TROUGH A COMMON SOFTWARE





# Our dream is to transform ...



Projet co-financé par le Fonds Européen  
financed by European Re

# ... into ...



Projet co-financé par le Fonds Européen de l'Environnement  
financed by European Region

# ... Zero kilometer insulation systems

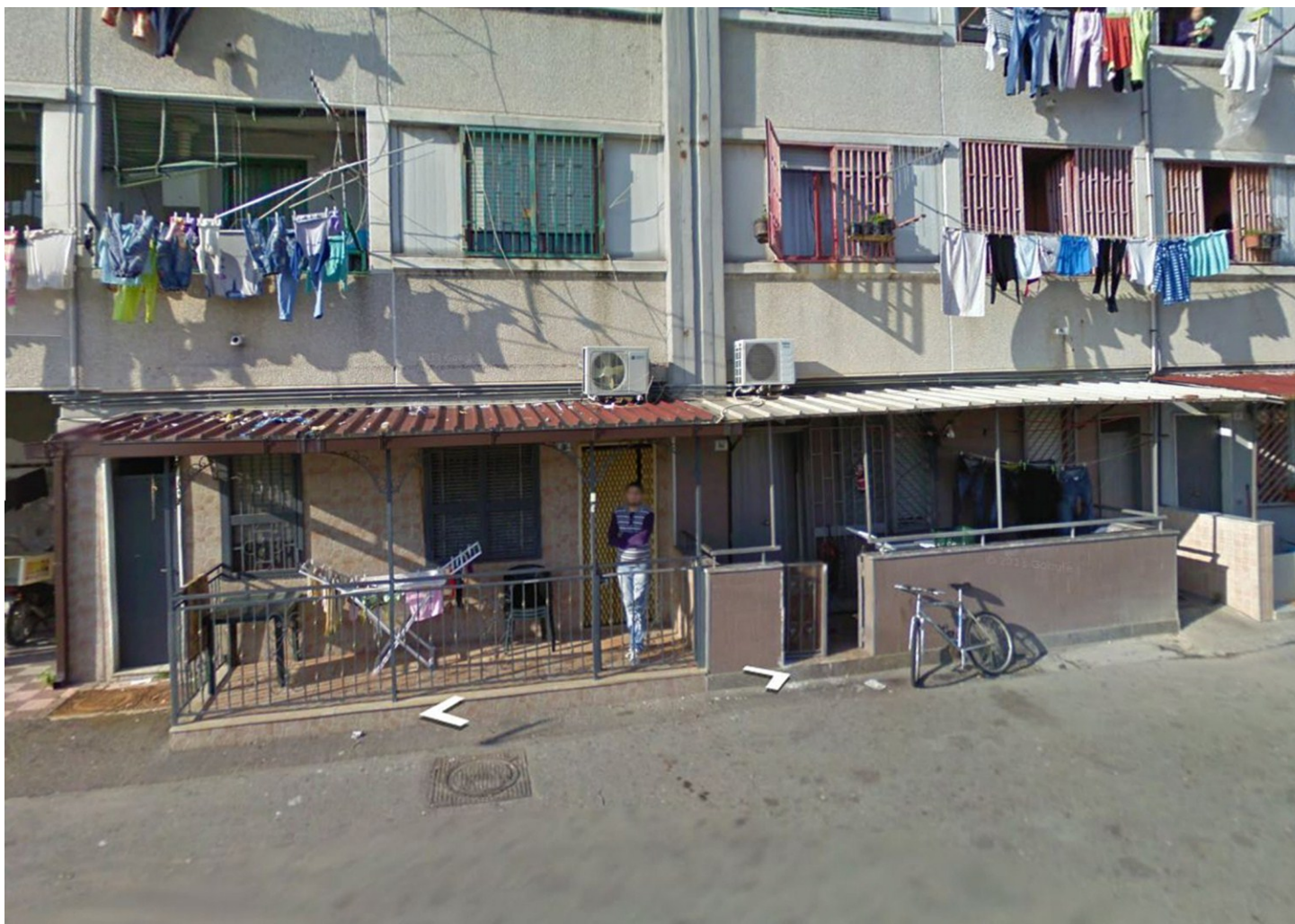


Projet co-financé par le Fonds Européen de Développement Régional  
financed by European Regional Development Fund - ERDF

# For some people the dream is already a truth



Comune di  
Frattamaggiore



Projet co-financé par le Fonds Européen de Développement Régional - FEDER Project co-financed by European Regional Development Fund - ERDF





Projet co-financé par le Fonds Européen de Développement Régional - FEDER Project co-financed by European Regional Development Fund - ERDF





# How the dream can go further...

---

- ▶ Again...
- ▶ increase the use of
- ▶ Structural and Investment Funds (ESIF)
- ▶ in the refurbishment of low income houses



Projet co-financé par le Fonds Européen de Développement Régional - FEDER Project co-financed by European Regional Development Fund - ERDF



## Contatti

---

- ▶ Anna Moreno - project coordinator
- ▶ Tel. +39 06 3048 6474
- ▶ E-mail: [anna.moreno@enea.it](mailto:anna.moreno@enea.it)
- ▶ [www.elih-med.eu](http://www.elih-med.eu)

