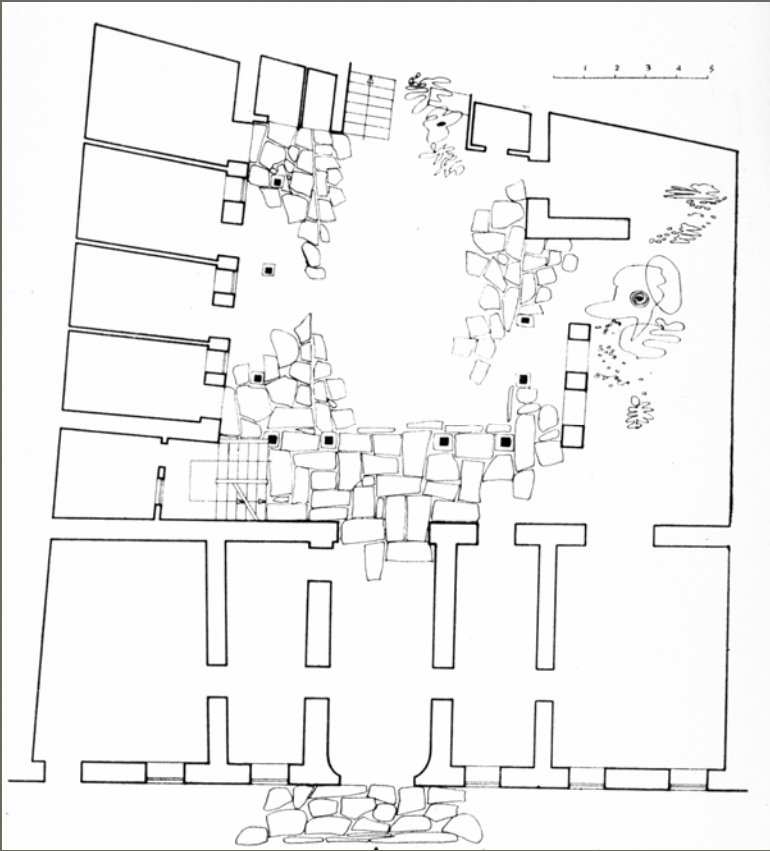


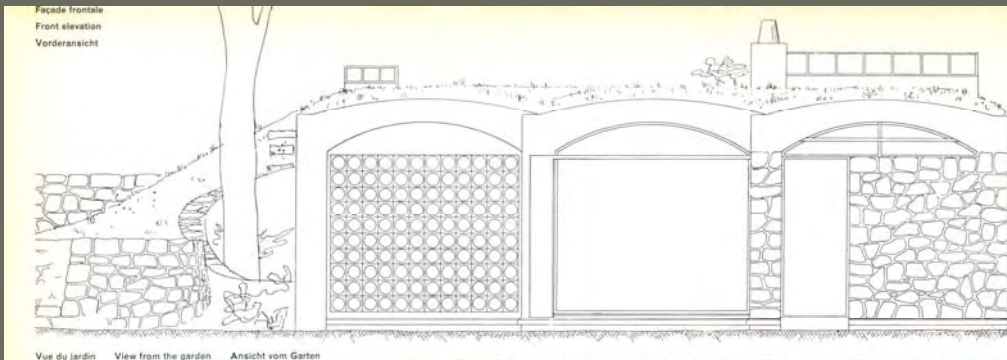
Ηλιακό σπίτι του Σωκράτη

(Σύγχρονη απεικόνιση Γ.Π Λάββα, ακαδημαϊκού)

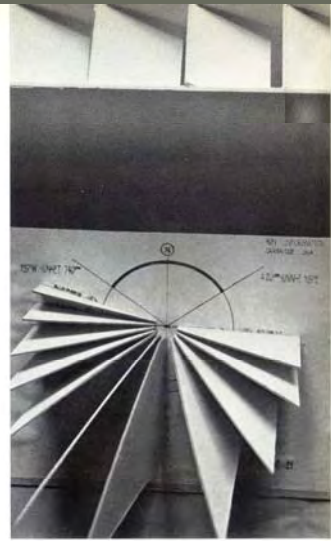


Αρχαίο Αθηναϊκό σπίτι της
εποχής του Σωκράτη, Σύγχρονη
απεικόνιση Γ. Π Λάββα,
αρχιτέκτονα

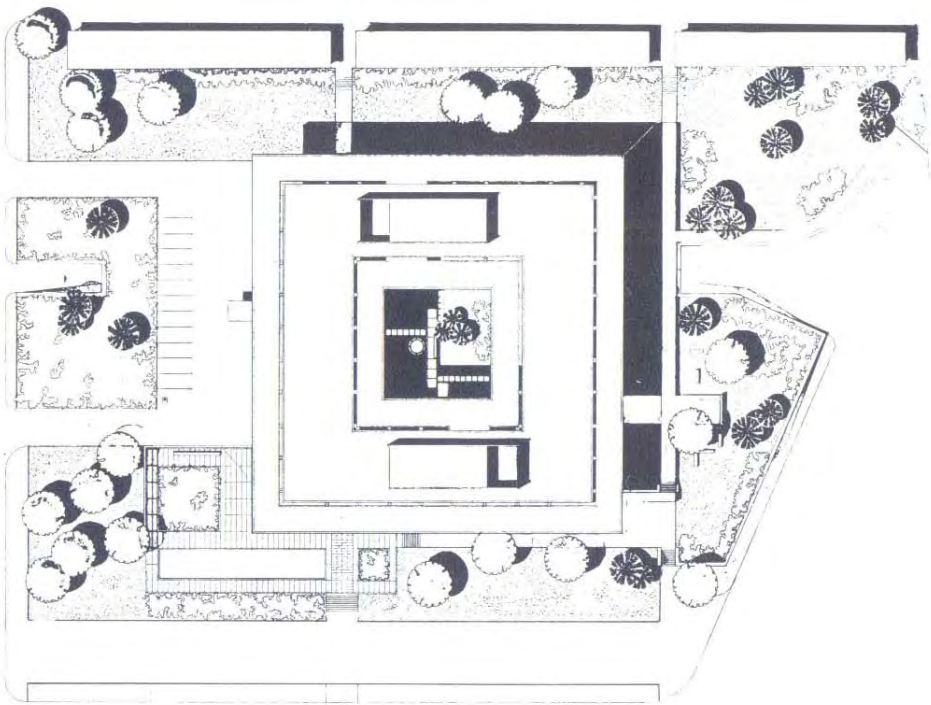




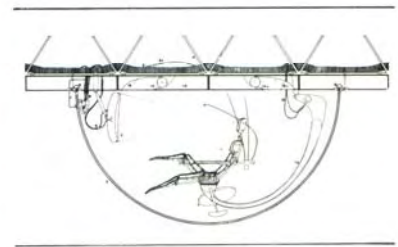
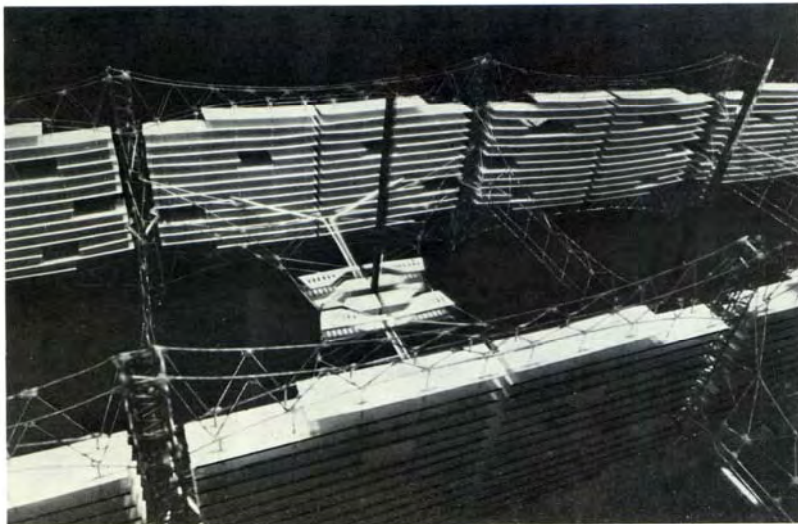
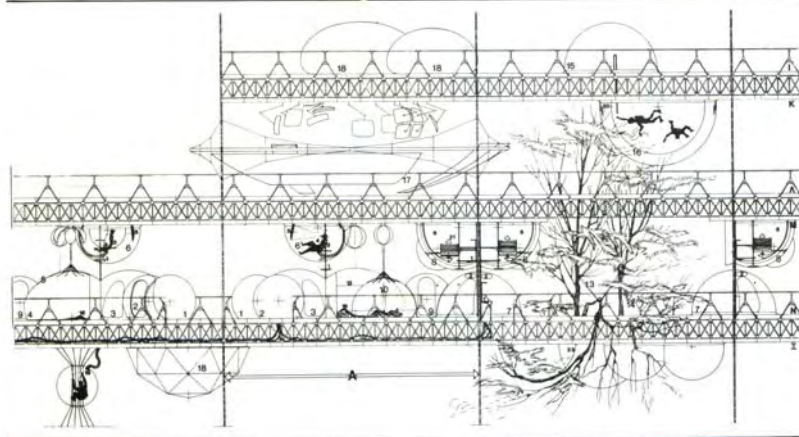
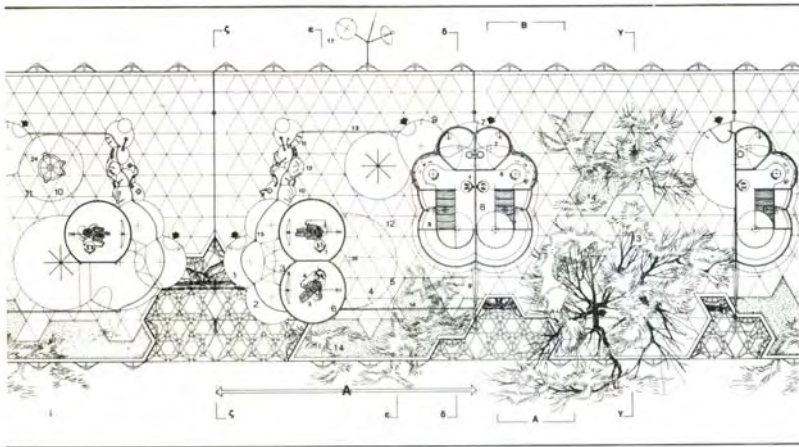
- Le Corbusier, Σπίτι διακοπών στα περίχωρα του Παρισιού, 1935



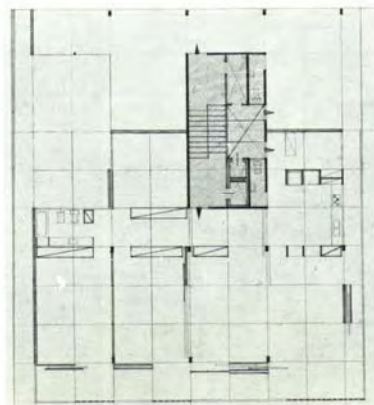
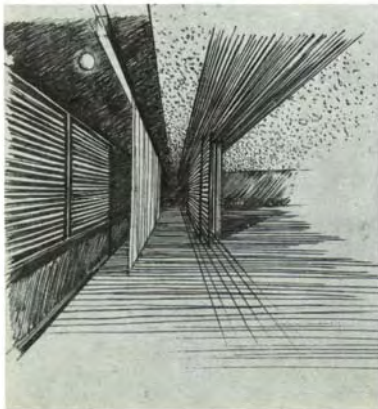
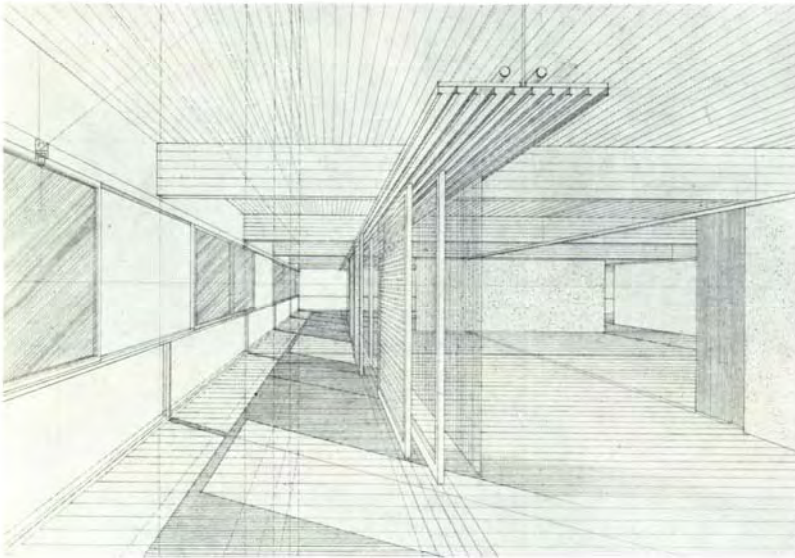
- Le Corbusier, Κέντρο Τεχνών, Μασαχουσέτη, ΗΠΑ, 1961



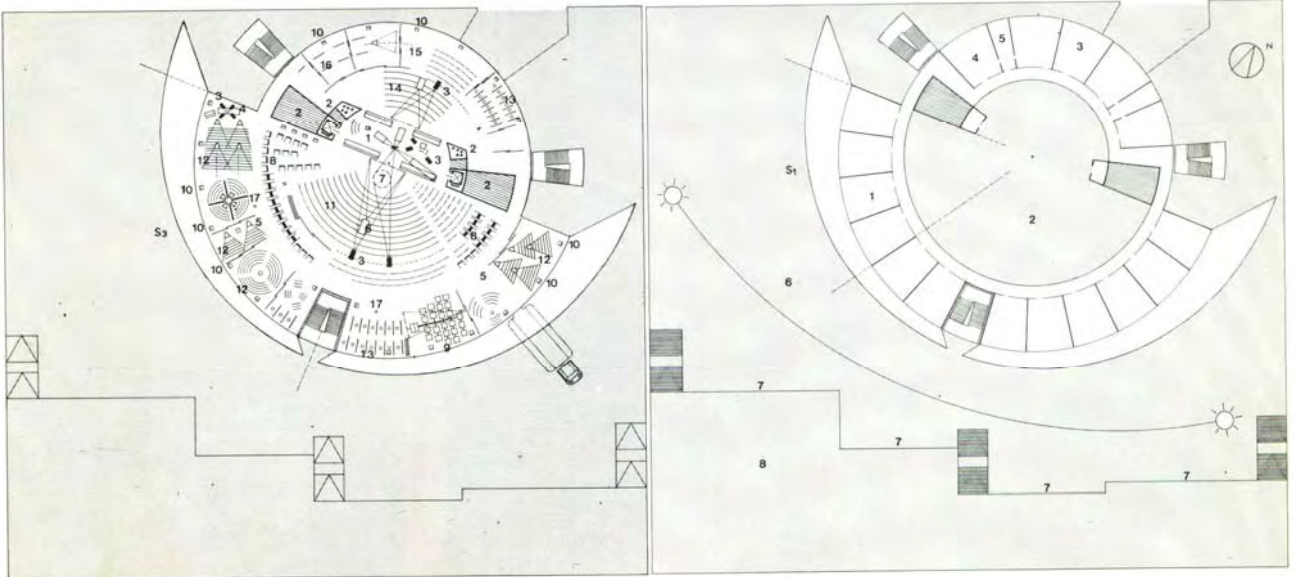
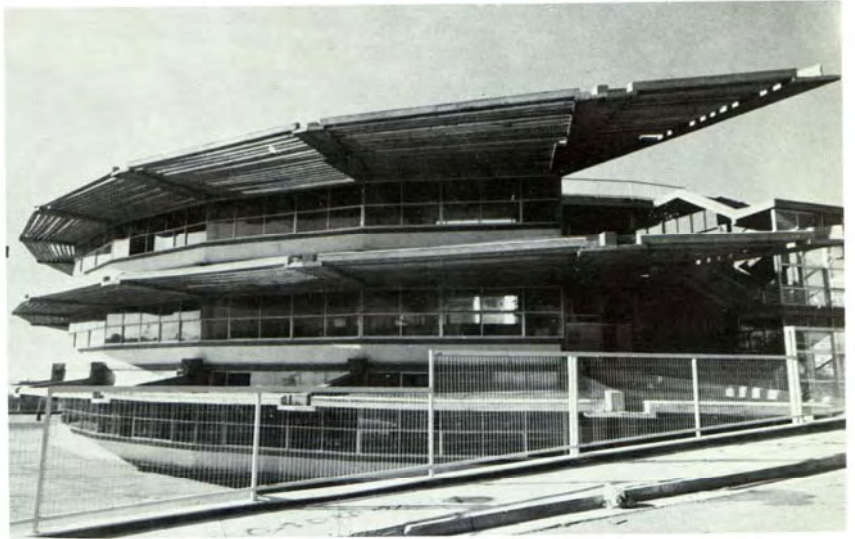
W. Gropius, Πρεσβεία ΗΠΑ, 1959



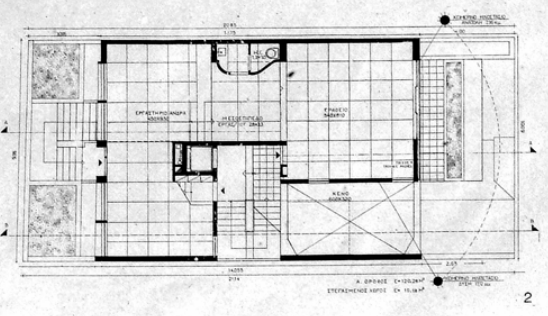
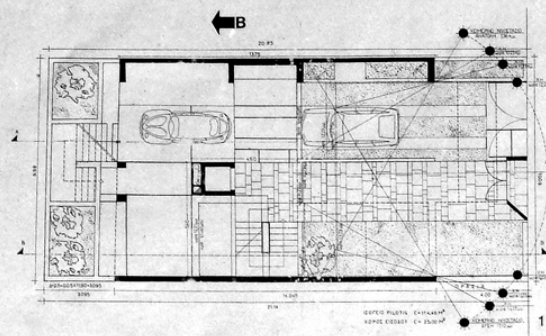
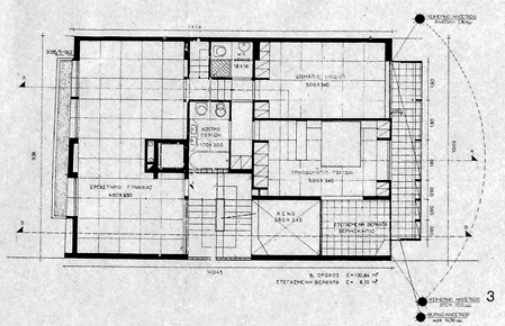
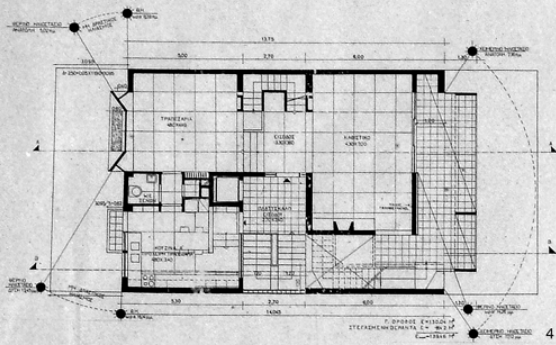
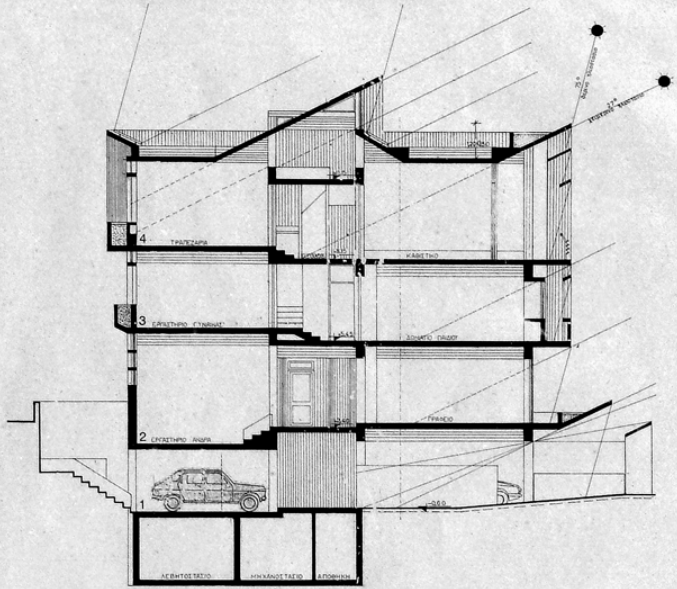
Τ. Ζενέτος, Ηλεκτρονική Πολεοδομία, Πόλη του μέλλοντος, 1952



Τ. Ζενέτος, Πολυκατοικία, Οδός Αμαλίας, 1959

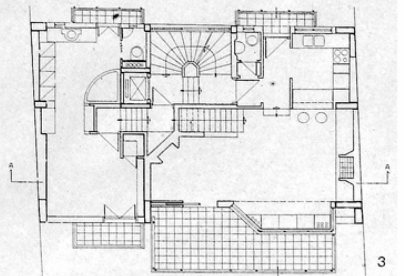
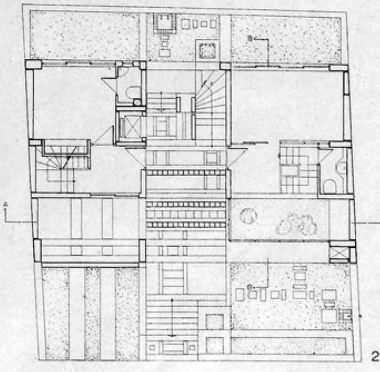
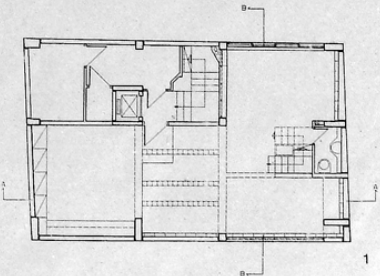
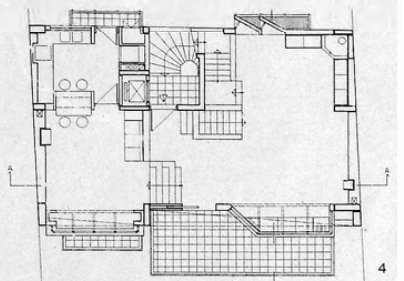
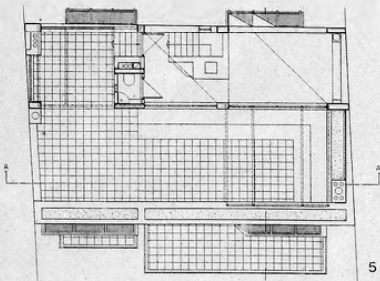
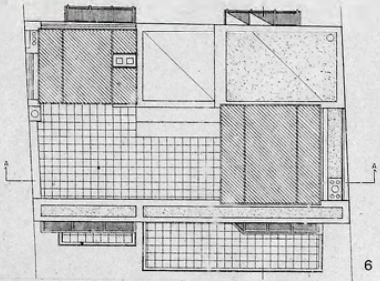
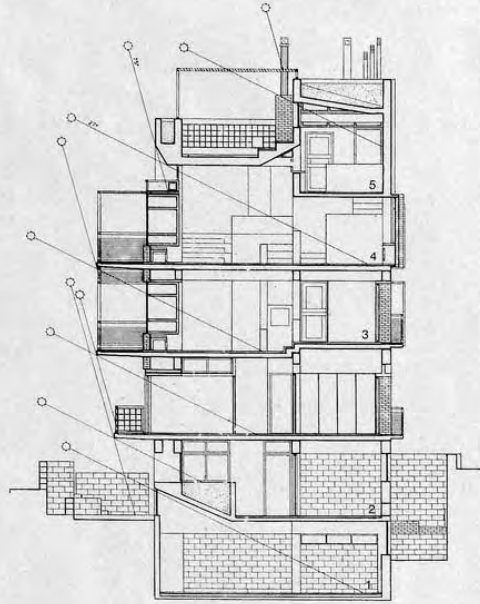


Τ. Ζενέτος, Γυμνάσιο, Αγ. Δημήτριος, 1969



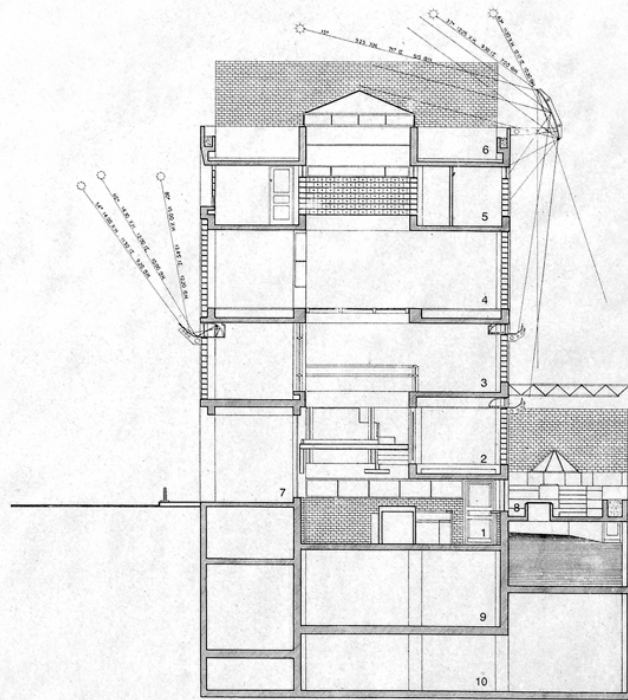
Κατοικία + studio 2 ζωγράφων, Ν. Φιλοθέη, 1981





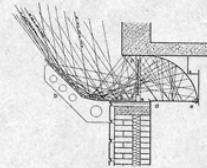
Πολυκατοικία στο Αττικό Άλσος, 1986



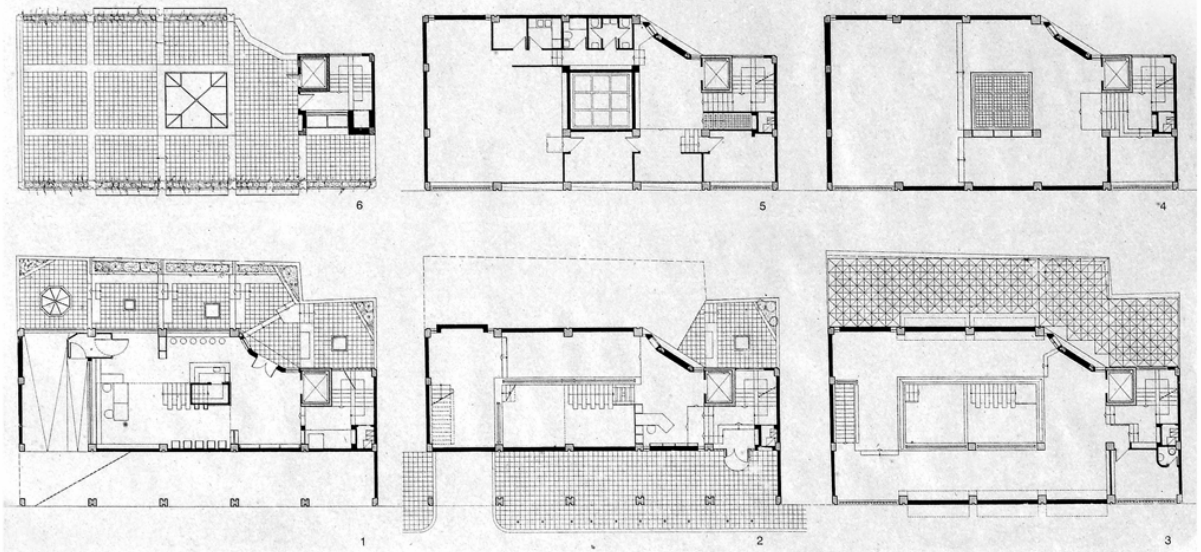


1. Semi - basement: Exhibition space for sculptures, jewellery, art bookstore, bar, secondary entrance *
2. Ground floor: Main entrance, reception, exhibition space
3. First floor: Exhibition space
4. Second floor: Space for periodical exhibitions
5. Third floor: Offices and conference hall
6. Roof terrace: Open air activities
7. Arcade
8. Internal yard
9. First basement: Laboratories, auxiliary space, garage
10. Second basement: Garage

The sun path
 63°: 11.30 a.m. Winter solstice-12.17 p.m. Equinox-10.30 a.m. Summer solstice
 37°: 12.25 p.m. Winter solstice-9.30 a.m. Equinox-7.00 a.m. Summer solstice
 15°: 9.25 a.m. Winter solstice-7.17 a.m. Equinox -5.15 a.m. Summer solstice
 00°: 15.00 p.m. Winter solstice-13.45 p.m. Equinox-12.30 p.m. Summer solstice
 60°: 14.30 p.m. Winter solstice-12.00 p.m. Equinox-10.00 a.m. Summer solstice
 54°: 14.00 p.m. Winter solstice - 11.30 a.m. Equinox-9.20 a.m. Summer solstice

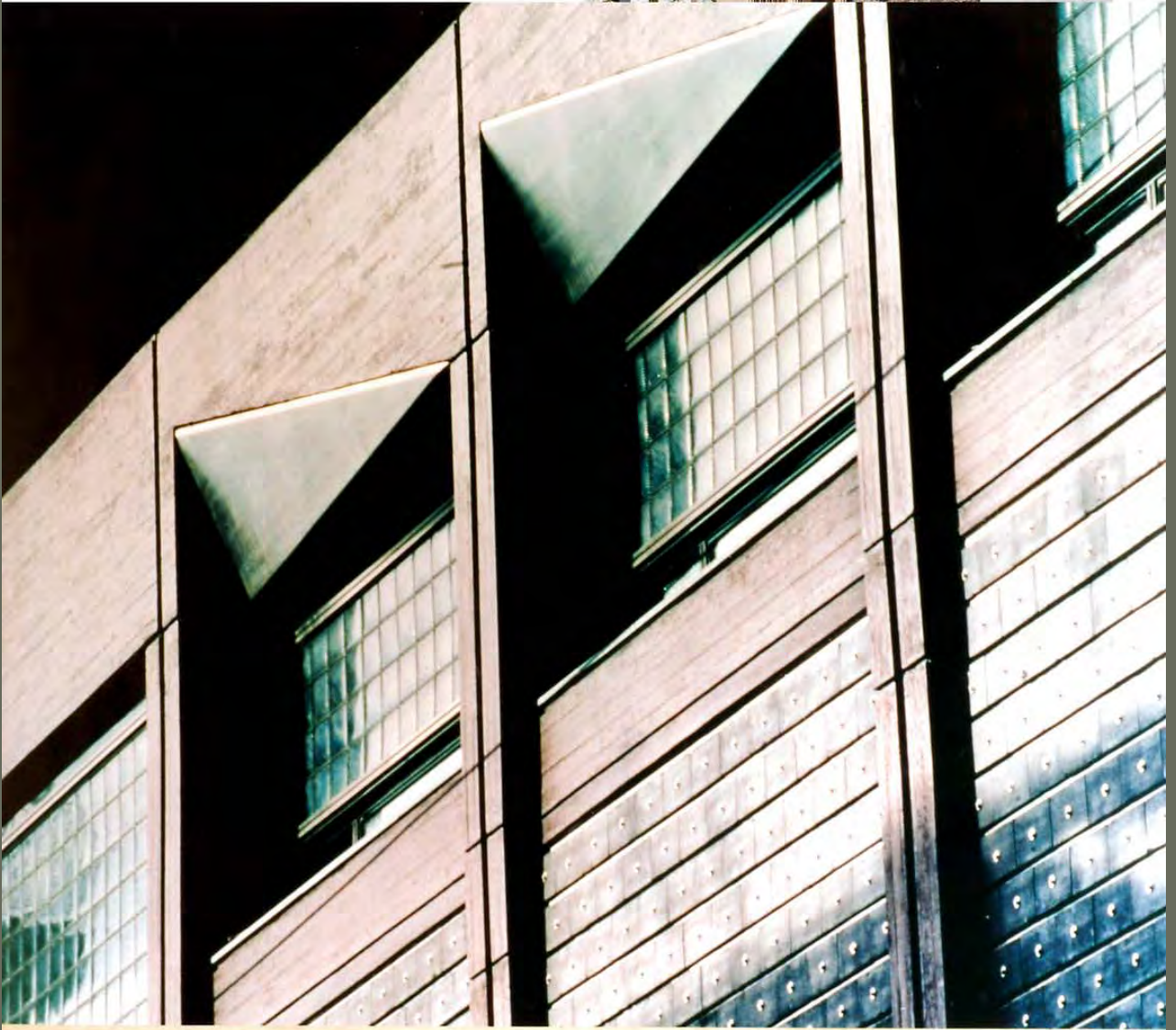


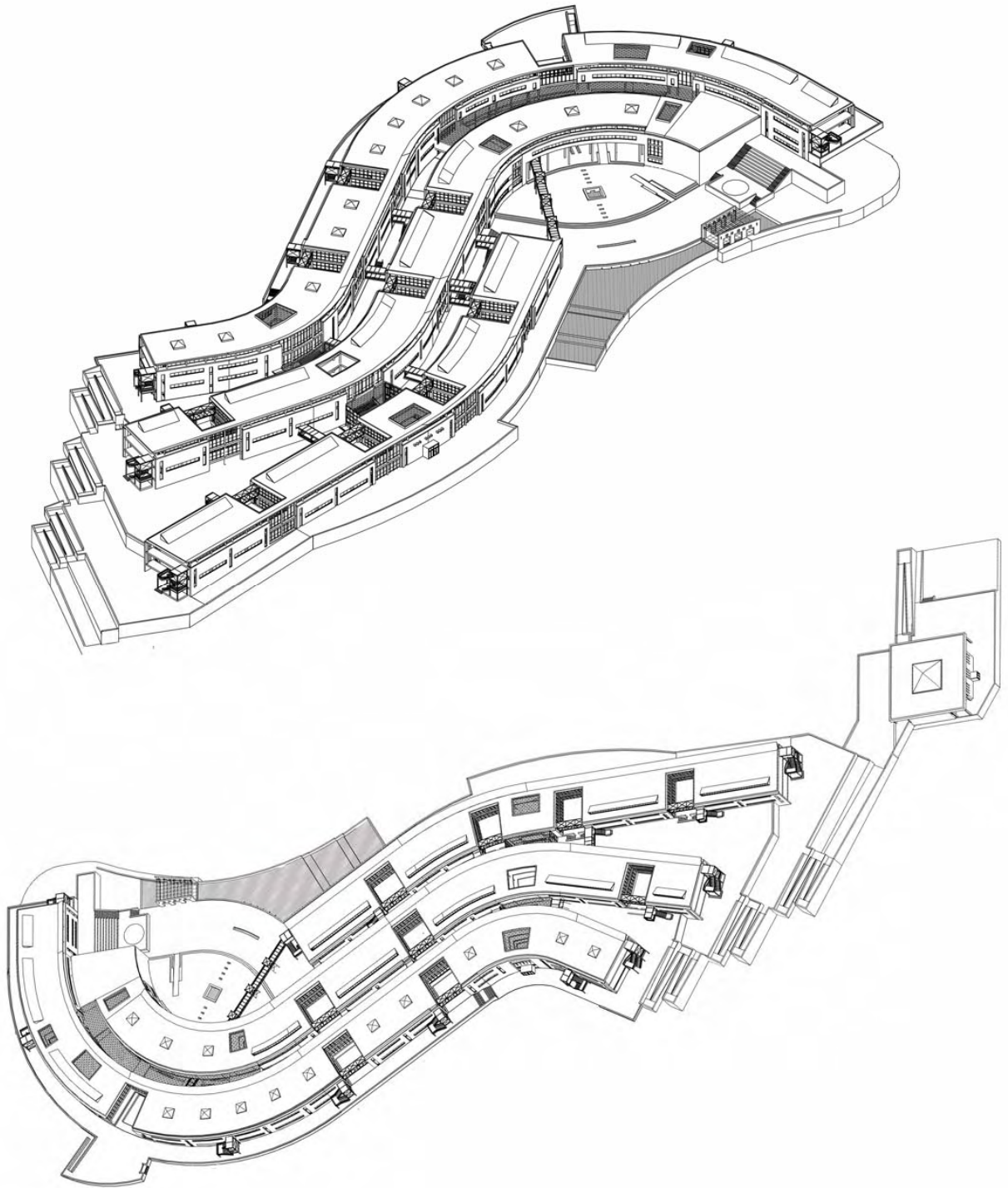
- Reflectors
- a. Reflectors made of aluminium
 - b. Slope metal bearings
 - c. Sky light
 - d. Material for day-light reflection and the absorption of ultraviolet rays
 - e. Artificial lighting





Το πνεύμα της πόλης
The spirit of the city





ΑΡΧΙΤΕΚΤΟΝΙΚΟΣ ΔΙΑΓΩΝΙΣΜΟΣ
ΠΑΙΔΑΓΩΓΙΚΩΝ ΤΜΗΜΑΤΩΝ
ΔΗΜΟΚΡΙΤΕΙΟΥ ΠΑΝΕΠΙΣΤΗΜΙΟΥ ΘΡΑΚΗΣ
1998

